

PRODUCT INFORMATION PACKET

Model No: 5KH39QN9642T
Catalog No: H133
1/2-1/6,1725/1140,DP,56,1/60/230
Fan and Blower



Regal and Marathon are trademarks of Regal Beloit Corporation or one of its affiliated companies.

©2018 Regal Beloit Corporation, All Rights Reserved. MC017097E

Nameplate Specifications

Output HP	1/2-1/6 Hp	Output KW	0.37 kW
Frequency	60 Hz	Voltage	230 V
Current	4.1,2.4 A	Speed	1725/1140 rpm
Service Factor	1	Phase	1
Efficiency	55 %	Duty	Continuous
Insulation Class	B	KVA Code	L
Frame	56	Enclosure	Drip Proof
Overload Protector	AUTO	Ambient Temperature	40 °C
Drive End Bearing Size	6203	Opp Drive End Bearing Size	6203
UL	Recognized	CSA	Yes
CE	N		

Technical Specifications

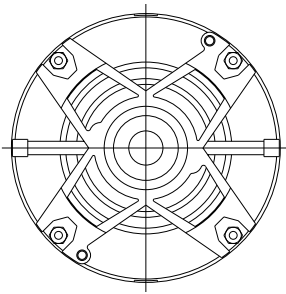
Electrical Type	Split Phase	Starting Method	SM
Poles	4	Rotation	Counterclockwise/Clockwise
Mounting	Resilient Base	Motor Orientation	ANY
Drive End Bearing	BALL	Opp Drive End Bearing	BALL
Frame Material	Rolled Steel	Overall Length	10.32 in
Frame Length	6.22 in	Shaft Diameter	0.63 in
Shaft Extension	1.88 in	Thru-bolts Extension	0
Outline Drawing	52A106982P1	Connection Diagram	52A105385AC

This is an uncontrolled document once printed or downloaded and is subject to change without notice. Date Created: 10/08/2018

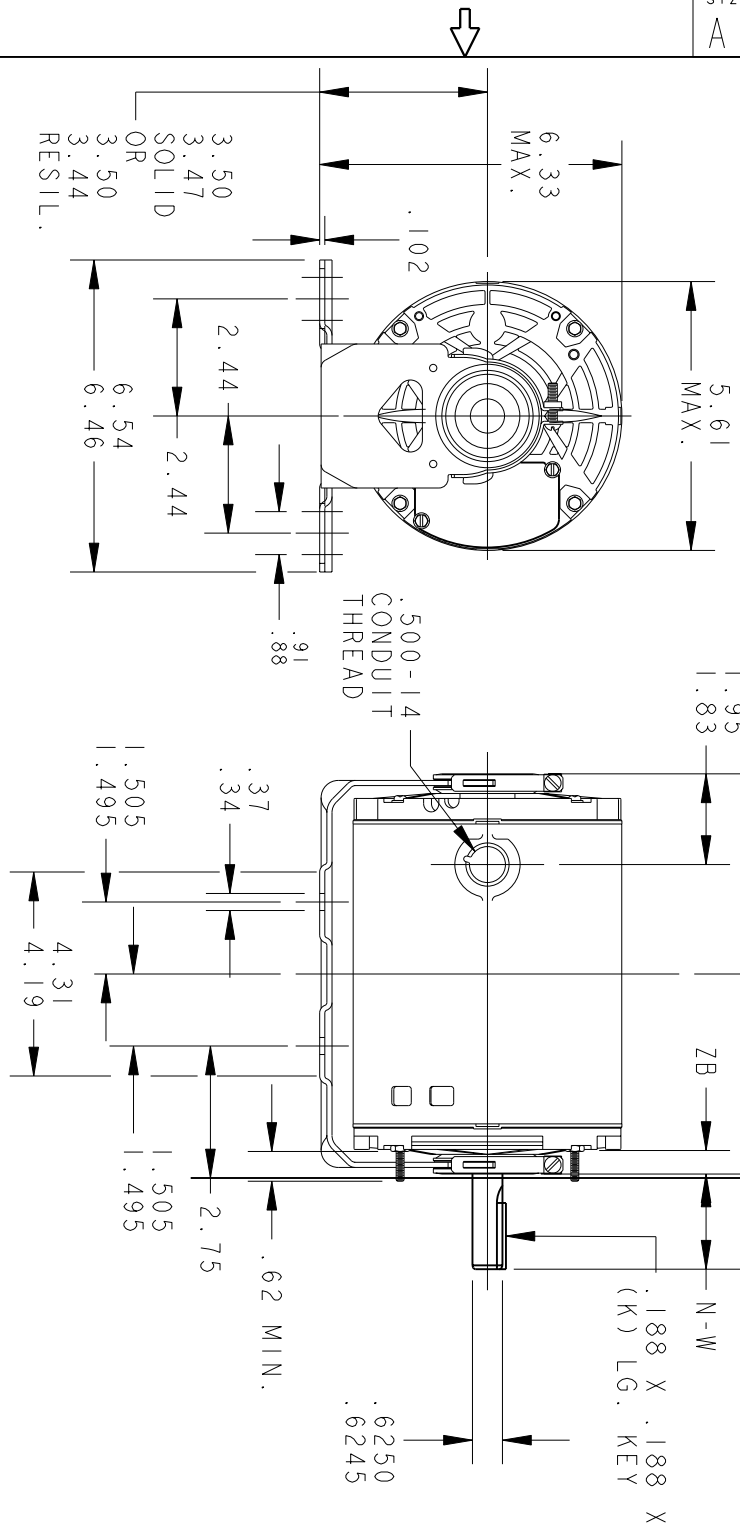
THIRD ANGLE PROJECTION



REV.	DESCRIPTION	DATE	APPROVED
1	REDRAWN WITHOUT CHANGE	04/28/92	BLJ
2	REDRAWN BY 2M SOFTWARE CO.	03/05/95	CCP
3	CHG TO RBC FORMAT PER IS05-1777	02/15/06	SUDHA



VIEW SHOWING
P.E. VENTILATION
OPENINGS



P	TYPE	GE SIZE	NEMA FR	C	K	L	N	N-W	ZB
1	KH	36	56	10.32	1.38	4.23	1.88	2.01/1.79	.69/.59

W * IS A CLEARANCE
DUE TO VARIATION
IN PARTS AND
ASSEMBLY.

SIGNATURES		DATE
MODEL	M.A.M.	10/09/89
DETAIL		
CHECKED		
ENGRG		
MFG		
QUALITY		
ISSUED	C.C.P.	03/05/95
SOLID MODEL:	52A106982	

REGAL-BELOTT CORPORATION

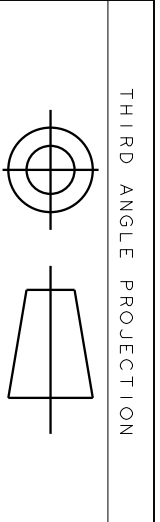
OUTLINE

**FORM N - GENERAL PURPOSE MOTOR - DRIP PROOF -
SOLID OR RESIL. BASE - BALL OR SLEEVE BEARING FWF: SKH390N963IT**

SCALE: 0.250 REF. No: .

52A106982

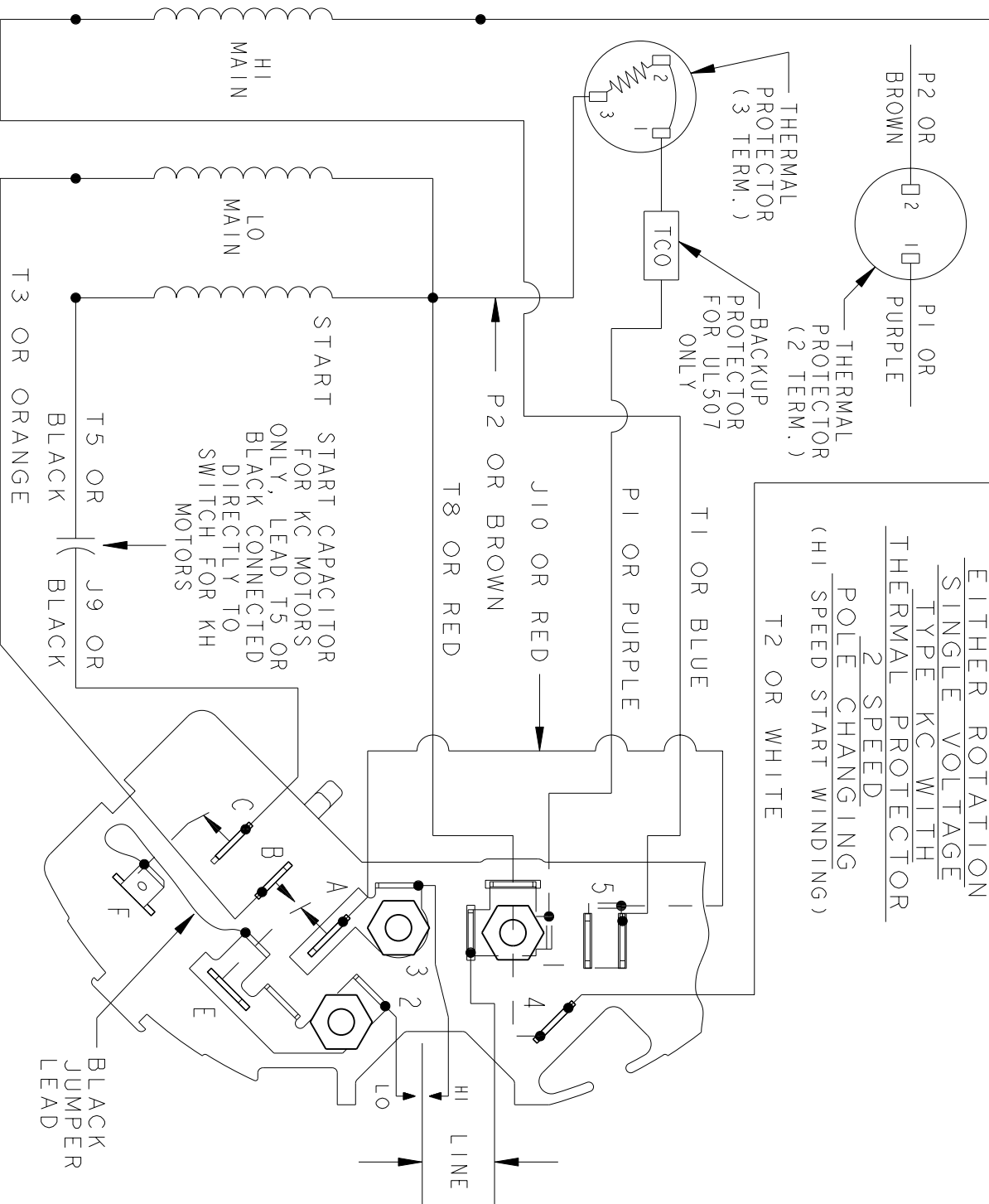
SHEET 1 of 1



REV.	DESCRIPTION	DATE	APPROVED
4	UPDATED FORMAT	12/19/05	MAM

REVISIONS

EITHER ROTATION
 SINGLE VOLTAGE
 TYPE KC WITH
 THERMAL PROTECTOR
 2 SPEED
 POLE CHANGING
 (HI SPEED START WINDING)
 T2 OR WHITE



NOTE #1 - TO REVERSE ROTATION INTERCHANGE BLUE (T1) AND WHITE (T2) LEADS.

NOTE #2 - WHEN MORE THAN ONE CAPACITOR IS USED CONNECT IN PARALLEL.

REF. DIAG. - 121A866

SWITCH (D) - 115D958BA
 CONNECTION LABEL - 52X332052

SIGNATURES	DATE
MODEL M.D.PAPE	12/14/87
DETAIL	
CHECKED	
ENGRG	
MFG	
FOR ADDITIONAL INFO REFER TO:	
APPLIED PRACTICES	QUALITY
DIMENSIONS ARE IN INCHES	ISSUED
MATERIAL	M.D.P.
	07/29/94
	SOLID MODEL: 52A105385AC



REGAL-BELOTT CORPORATION

CONNECTION DIAGRAM

FMF: 5KH35KN14IG5

52A105385AC

SIZE DRAWING	A	SCALE: 1.000	REF. No.:		SHEET 1 of 1
--------------	---	--------------	-----------	--	--------------